

CHAPTER ONE: DEMOGRAPHIC OVERVIEW

This chapter provides an overview of demographic trends and background information needed to understand the changes that have taken place in Clay County. The Demographic Overview Chapter includes data on population, age, race and ethnicity, and household trends.

POPULATION TRENDS

This section examines historic and current population trends in Clay County and provides population projections. Although most of the analysis included in this section focuses on population growth in the recent past, an assessment of historical population statistics is warranted.

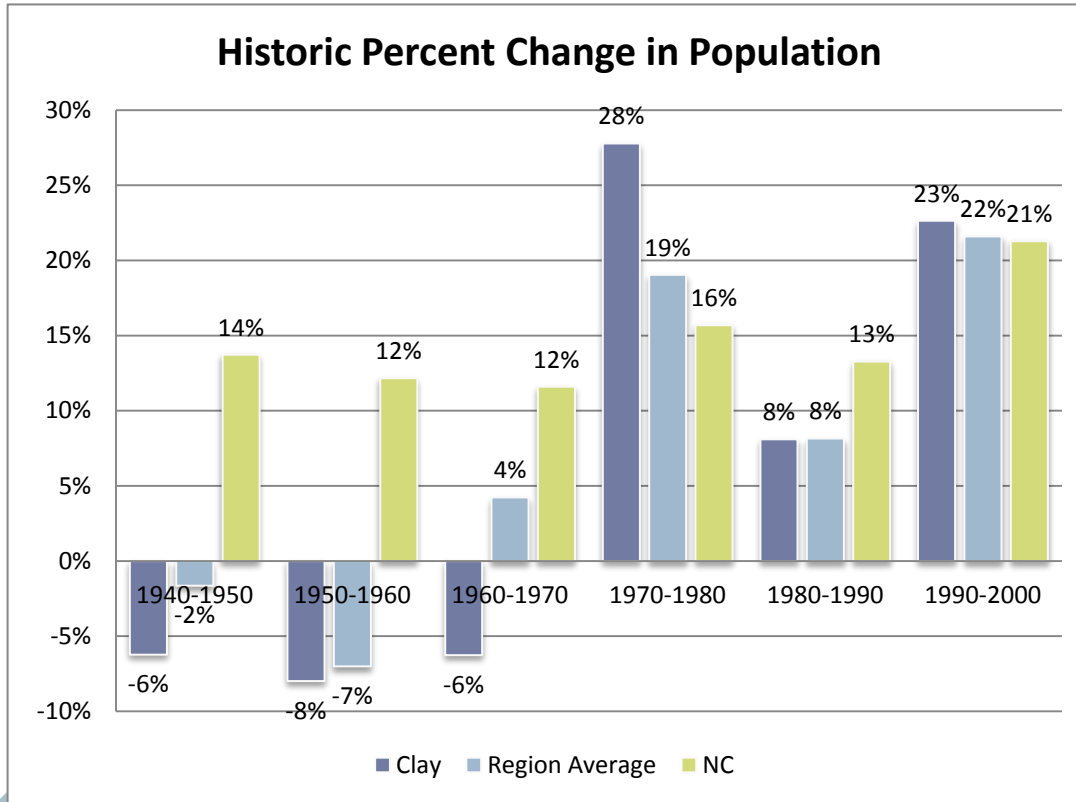
HISTORIC POPULATION ANALYSIS: 1940-2000

Clay County has an interesting historical population trend. Between the 1940 and 1970 decennial censuses, Clay County's population decreased by about 7% each decade; hitting its low point in 1970 with a population of 5,180. Between 1940 and 1970, the total population decreased by 20%. The trend drastically changed between 1970 and 1980 when the population increased by 28% in ten years. Population increased another 8% between 1980 and 1990 and another 23% between 1990 and 2000, bringing the county's population to 8,775.

Table 4: Clay County Historic Population						
1940	1950	1960	1970	1980	1990	2000
6,405	6,006	5,526	5,180	6,619	7,155	8,817
Source: NC DCA, NC State Data Center, US Census Bureau						

Compared to surrounding counties and the state for the same time-period, Clay's rate of growth between 1940 and 1970 was below average. However, between 1970 and 2000, Clay County's population growth rate exceeded or was equal to the average growth for the comparison area. In the years between 1970 and 1980 and between 1990 and 2000, Clay County's growth exceeded North Carolina's growth rate. Let it be noted, however, that large percentage increases and decreases can be misleading when numbers are small to begin with.

Chart 1: Historic Percent Change in Population



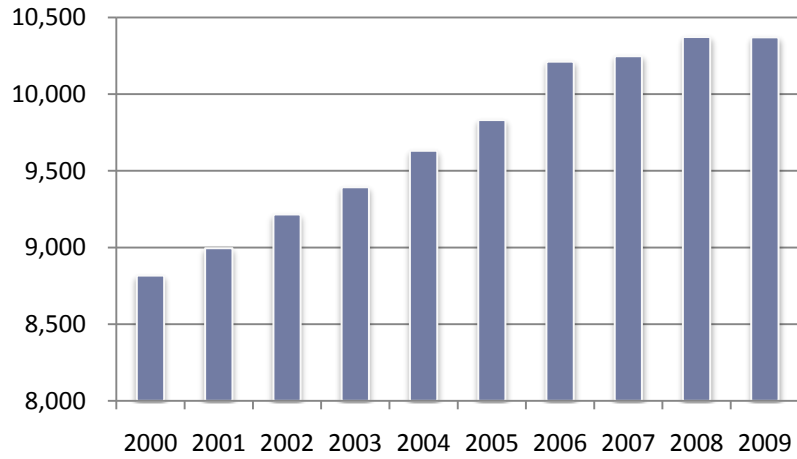
Source: NC DCA, NC State Data Center, US Census Bureau

CURRENT POPULATION ANALYSIS: 2000-2010

As the last section illustrated, the population in Clay County began to grow between 1970 and 1980. This upward growth trend has continued, with the exception of a -0.02% change between 2008 and 2009. From 2000-2009, the population increased by 18%, an average rate of 2% per year. Compared to the region and the state, Clay County’s rate of growth outpaced both. Clay County’s actual growth between 2000 and 2009 was 21%, whereas the region’s was 12% and the state’s was 16%. Of the comparison counties, Clay County had the greatest amount of growth during this span of time, followed by Towns County (18%) and Jackson County (15%). Graham County had the least amount of growth at 3%.

Chart 2: Clay County Population: 2000-2009

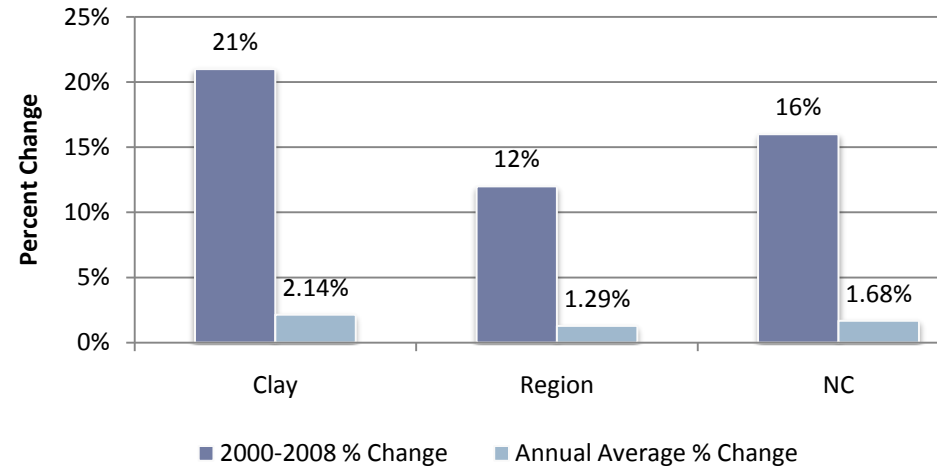
Clay County Population: 2000-2009



Source: NC State Data Center

Chart 3: 2000-2008 Regional Population Changes

2000-2008 Regional Population Changes



Source: NC State Data Center

DRAFT

FUTURE POPULATION ANALYSIS: 2010-2030

The exercise of predicting the rate of future population growth is challenging and inexact. The County's actual future population depends on a number of factors, including economic conditions, attitudes toward growth, school performance, and a host of other factors. The following table presents a range of population projections for the county from the present through 2030.

	2000 ¹	2005 ²	2010	2015	2020	2025	2030
NC State Data Center Projection	8,817	9,831	10,732	11,667	12,602	13,537	14,472
25-Year Straight Line Projection ³	8,817	9,694	10,309	10,924	11,539	12,154	12,769
25-Year Projection, Compounded ⁴	8,817	9,694	10,464	11,295	12,192	13,160	14,205
15-Year Straight Line Projection ⁵	8,817	9,694	10,494	11,294	12,094	12,894	13,694
15-Year Projection, Compounded ⁶	8,817	9,694	10,672	11,748	12,932	14,236	15,672
¹ US Census Bureau, 2000							
² US Census Bureau, 2005 population estimates; except NC State Data Center projection which was reported as 9,831							
³ Extrapolated based on the average annual population change from 1980-2005 (2005 population-1980 population)/(25)							
⁴ Extrapolated based on the average annual rate of population growth 1980-2005 (1.5%)							
⁵ Extrapolated based on the average annual population change from 1990-2005 (2005 population-1990 population)/(15)							
⁶ Extrapolated based on the average annual rate of population growth 1990-2005 (1.9%)							

These projections were derived using a variety of methodologies:

- **NC State Data Center Projection.** The North Carolina State Data Center forecasts an annual population growth rate of 1.6% over the period (2005-2030). Projection of this rate forward results in a population of 14,472 in 2030. It has been observed that the Data Center's projections are generally accurate when past projections are compared to actual population counts.
- **25-Year Straight Line Projection.** This scenario was calculated by determining the county's average annual population change for the 25-year period from 1980-2005 and projecting that forward for the next 25 years. The County's 25-year average was an increase of 123 people per year. Carrying this growth rate forward would result in a population of 12,769 by 2030.
- **25-Year Rate Projection (Compounded).** This scenario was calculated by determining the county's average annual rate of growth for the 25-year period from 1980-2005, and projecting that rate forward for the next 25 years. The average annual rate of increase was 1.5% per year. Carrying this growth rate forward would result in a population of 14,205 by 2030.
- **15-Year Straight Line Projection.** This scenario was calculated by determining the county's average annual population change for the 25-year period from 1990-2005 and projecting that forward for the next 25 years. The County's 25-year average was an increase of 160 people per year. Carrying this growth rate forward would result in a population of 13,694 by 2030.
- **15-Year Rate Projection (Compounded).** This scenario was calculated by determining the county's average annual rate of growth for the 15-year period from 1990-2005, and projecting that rate forward for the next 25 years. The average annual rate of increase was 1.9% per year. Carrying this growth rate forward would result in a population of 15,672 by 2030.

Selected Population Forecast

The county needs population projections to develop a basis for development projections, housing demand, and future land use planning. Projections also support planning for future infrastructure needs, parks and recreation facilities, schools, and other county services. The above scenarios present 2030 projections ranging from 15,672 as the highest projection to 12,769 as the lowest. Given all of the population growth scenarios, the CCCP will use the NC State Data Center projection, as it is the most reasonable. This projection results in a population of 14,472 in the year 2030. This projection represents a balanced approach that accounts for a number of growth accelerants *and* limiters. The below bullets illustrate some of the reasons for selecting this projection scenario:

- Clay County is poised for growth, but it has some barriers to development from a terrain and infrastructure perspective—warranting a somewhat conservative population projection.
- The county is in a position to capture a share of growth because of its proximity to several metropolitan areas.
- Clay County may be better positioned to capture new growth, in comparison to other communities in the region that are struggling to a greater extent with poverty, unemployment, and other social problems. The quality of community facilities such as the school system, recreation opportunities, and Lake Chatuge will continue to attract new growth.
- Selecting a projection at this level avoids the consequence of under-projecting population. The alternative of selecting a projection that is exceeded by actual growth over the planning period would mean that the county's plans will not provide for a sufficient amount of developable land and facilities to meet realized population growth. In other words, the plan would become obsolete more quickly.
- Within the range of projection scenarios, the recommended scenario is actually a moderate approach—in affect an average of the lowest and highest projection in the table.

POPULATION DENSITY

Population density is an indication of the intensity of development within a geographical area. In 1990, Clay County had a population density of 33.3 persons per square mile. The 2000 Census indicated the population density increased by 23% to 40.9 persons per square mile, a growth rate slightly higher than the regional average of 22%. For the same period, the population density of North Carolina increased by 21% to a population density of 165.2 persons per square mile in 2000 from 136.1 in 1990. When compared to surrounding counties, the counties of Jackson and Haywood have the highest density and Graham and Swain have the lowest. In terms of percentage increase, Towns and Macon Counties lead, while Haywood, Graham, and Swain had the least.

The NC State Data Center projections provide a density range rather than actual the actual number of persons per square mile. In 2010 and 2020, the number of persons per square mile is projected to be between 0-75 persons per square mile. Regionally (excluding Towns County, GA), Cherokee, Clay, Graham, and Swain are projected to remain below 75 persons per square mile. Haywood and Jackson are projected to remain between 75-150 persons per square mile. Macon County is projected to grow from 0-75 persons per square mile in 2010 and 75-150 persons by 2020.

	1990	2000	% Change	2010	2020
Cherokee	44.3	53.4	21%	0-75	0-75
Clay	33.3	40.9	23%	0-75	0-75
Graham	24.6	27.4	11%	0-75	0-75
Haywood	84.8	97.6	15%	75-150	75-150
Jackson	54.7	67.5	23%	75-150	75-150
Macon	45.5	57.7	27%	0-75	75-150
Swain	21.3	24.6	15%	0-75	0-75
Towns	40.6	55.9	38%	*	*
Regional Average	43.6	53.1	22%		
NC	136.1	165.2	21%	*	*

Sources: US Census Bureau, 1990, 2000; NC State Data Center

TOWN OF HAYESVILLE POPULATION

The most recent population count for the Town of Hayesville is available from the NC State Data Center, which reports a 2008 population of 511.⁶ According to historical Census data, Hayesville has had an up and down population trend. Between 1950 and 1960, there was a 20% population increase, followed by a decade of no change in population. Then, over the next two decades, Hayesville lost 38% of its population, yet it rose by 6% between 1990 and 2000. According to State Data Center figures, Hayesville grew by 6% in the years between 2000 and 2008. The NC State Data Center does not project populations for municipalities; therefore, only historic data is presented.

	1950	1960	1970	1980	1990	2000	2008
US Census Bureau	356	428	428	376	279	297	--
NC State Data Center	--	--	--	--	--	458	511
% Change	--	20%	0%	-12%	-26%	6%	12%

Source: US Census Bureau, NC State Data Center

⁶ It is important to note that there is a difference between in methodology between how the US Census Bureau and the Data Center calculate population. The Data Center's methodology can be found here: http://www.osbm.state.nc.us/ncosbm/facts_and_figures/socioeconomic_data/population_estimates/demog/mun08txt.html

AGE TRENDS

Age distribution is an important factor when considering future demand for County services, housing, schools, parks and recreation facilities, and the provision of social services. The CCCP evaluates the age distribution of Clay County residents from three angles: age distribution, the baby boom effect, and median age.

AGE DISTRIBUTION

In this analysis, three age categories are examined to aid in planning for future services, the youth (ages 0-14), the working age (ages 15-64) and the aging (ages 65 and above). In general, Clay County is getting older as time goes by. Chart ___ and the following narrative discuss this age trend in detail.

Youth: The percentage of youth in the total population is slightly on the decline in Clay County—a 1-2% decrease between the time-periods evaluated. This trend is replicated in the region and in North Carolina. This decrease in youth population as a percentage of the total population may be attributed to the general aging of the population and due to the fact that family size across the nation is shrinking—families today have fewer children. The trend seen here contradicts the trend seen in the Clay County School system, which has experienced an increase in the enrollment for students in this age range.

Working: Like the youth, the working age population in Clay County is slightly on the decline; with changes between time-periods ranging from a 1% growth in population between 1990 and 2000 to a 5% decrease between 2009 and what is projected for 2020. This trend is generally true for counties in the region and North Carolina. Like Clay, most counties had a minor rise, about 1%, in the working population between 1990 and 2000, and a 1-3% decrease between 2000 and 2009. Most counties as well as the state will see an additional 2-3% decline in the working age population between 2009 and 2020. Dynamics related to the baby boom generation may be attributed to working age population changes. It is also likely that the lack of employment opportunities in the county and the region attribute to the decrease in the working population. It appears those that are of working age often leave the county in search of employment.

Aging: The regional and state trend for the aging population is upward—this is true for Clay County more so than other counties. Between 1990 and 2000, the aging population increased by 3%. It increased by 5% between 2000 and 2009, and is projected to increase by 6% by 2020. These increases are higher than the regional and state increases. Like the working population, this increase can be attributed to the baby boom generation, which will be discussed in the next section. The increase in the aging population may also be attributed to the high number of retirees that have moved to Clay County in recent years.

Table 8: Age Trends (Percent of Total Population) → reformat for easier reading										
		Cherokee	Clay	Graham	Jackson	Haywood	Macon	Swain	Region Average	NC
Youth	1990	18%	18%	19%	16%	17%	16%	21%	18%	20%
	2000	17%	15%	18%	16%	17%	16%	20%	17%	21%
	2009	15%	13%	18%	15%	16%	15%	19%	16%	20%
	2020	14%	12%	19%	15%	16%	17%	20%	16%	19%
Working	1990	63%	62%	65%	70%	65%	61%	64%	64%	68%
	2000	64%	63%	64%	71%	64%	61%	65%	64%	67%
	2009	60%	60%	62%	69%	63%	59%	64%	62%	68%
	2020	57%	55%	60%	64%	60%	56%	61%	59%	65%
Aging	1990	19%	20%	16%	14%	18%	22%	15%	18%	12%
	2000	20%	23%	18%	14%	19%	22%	15%	19%	12%
	2009	24%	27%	20%	17%	22%	25%	17%	22%	13%
	2020	29%	33%	21%	20%	24%	27%	19%	25%	15%

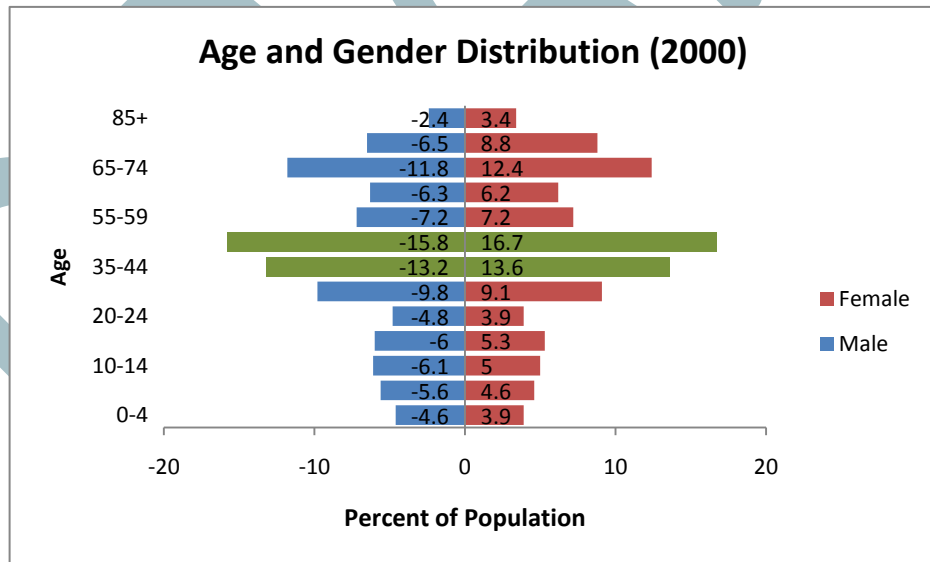
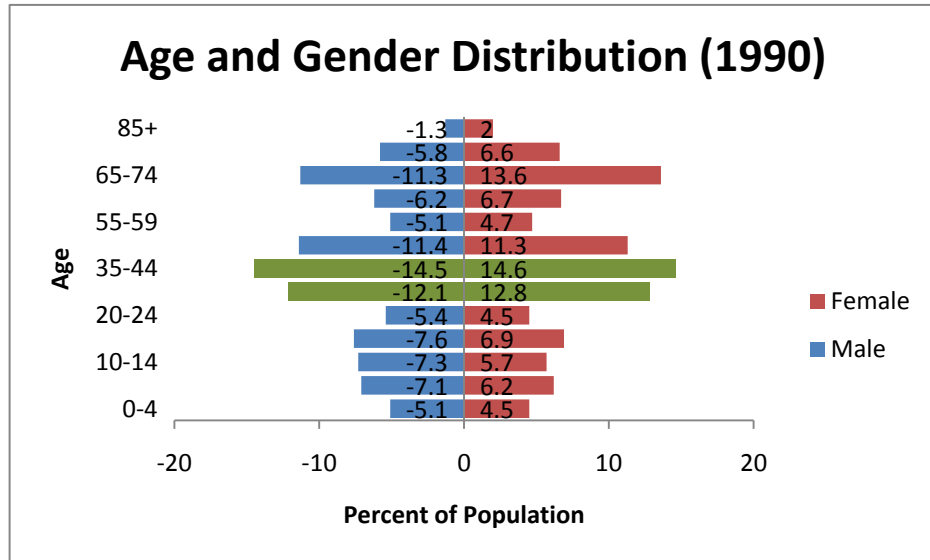
Source: US Census Bureau, 2000; NC State Data Center, NC Economic Development Intelligence System (EDIS)

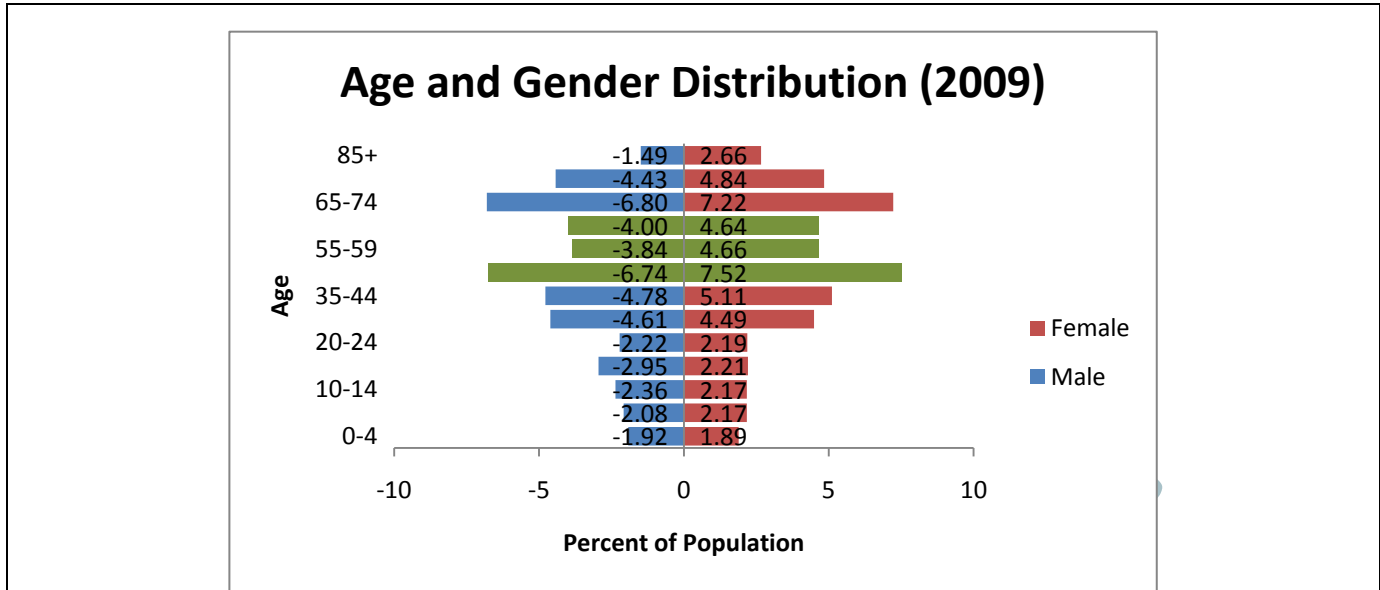
THE BABY BOOM GENERATION

According to the US Census Bureau, those born between 1946 and 1964 are part of the Baby Boom Generation. Communities across the country struggle with how to plan for and manage the aging population—and Clay County is no different. For example, workforce dynamics change as more baby boomers retire and there are fewer workers to replace them. Additionally, communities can anticipate a greater strain on social services as these people age. Therefore, it is helpful to note what share of Clay’s population fall into this generation.

As noted in the chart above, the working age population is declining over time while the aging population is growing. The eldest boomers have already transitioned from the working population age group to the aging group and there are many more to follow. The population pyramids below visualize this effect—the green bands (the bulges) on the charts signify the baby boomers. In 1990, baby boomers were between the ages of 26 and 44, which was about 54% of the county’s population. In 2000, they were between 36 and 54, about 30% of the county’s population, and they were between 45 and 63 in 2009, about 31% of Clay County’s population.

Chart 4: Age and Sex Distribution 1990, 2000, and 2009





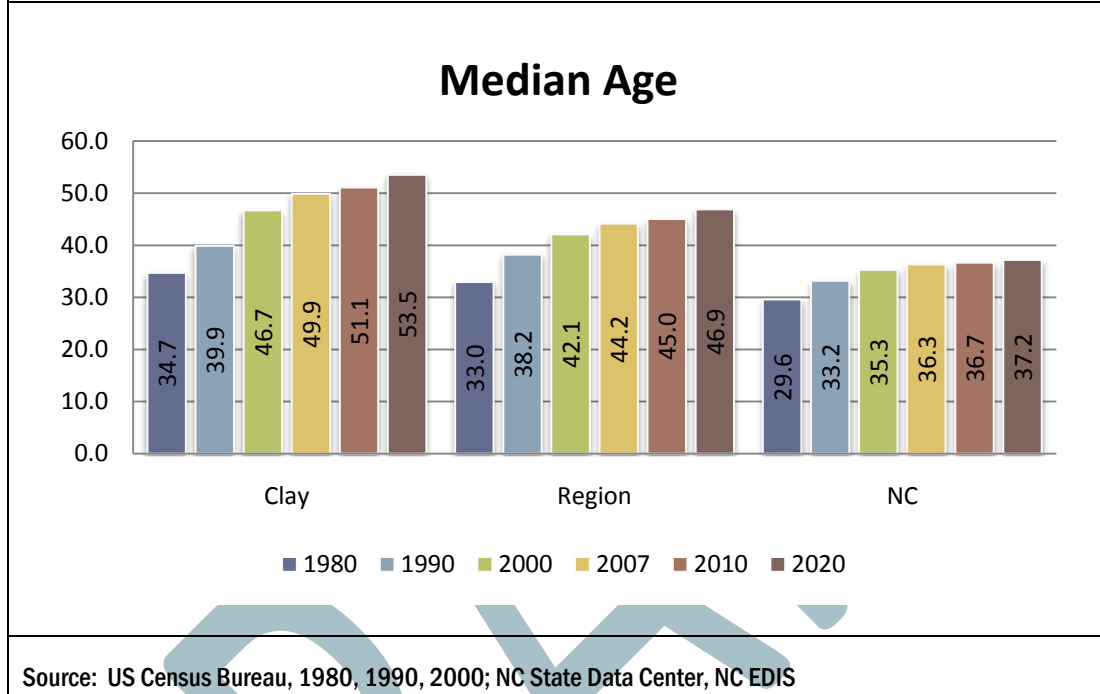
Source: US Census Bureau, 2000, 1990; NC EDIS

MEDIAN AGE

The final age factor discussed is median age. During the CCCP planning process, many noted the County’s high percentage of retirees in the county’s general population contribute to the graying of the county. While this is not untrue, it is not the whole truth. As early as 1981,⁷ the county’s median age was above that of the region and state, as it still is today and is projected to be in the future. In 1981, and even in 1990 and 2000, the concentration of retirees was significantly lower than it is today. Additionally, the inflow of retirees is not unique to Clay County; it is true for all counties in the comparison area. Therefore, while the retirement population may attribute to a higher median age, it is not the sole factor. The factor that may have more of an effect is the out-migration of young people—either those who leave for college and don’t return or those who leave in search of better employment opportunities. Communities that experience youth flight trend toward a higher median age simply because the younger end of the working population is not present. A good contrast is the median age history of North Carolina. The state’s median age is significantly lower because those at the younger end of the age spectrum represent a greater portion of the overall age spectrum.

⁷ The earliest median age data available from the NC State Data Center.

Chart 5: Median Age



RACE AND ETHNICITY

From the time early Western North Carolina settlers came into a landscape formerly dominated by a Native American population, Clay County and the surrounding counties have remained relatively non-diverse. This is particularly true for Clay County. Overall, there have only been minor incremental changes in the region's racial makeup. Table ___ reports race as a percent of total population for 1990, 2000, and 2009. Because the white population of Clay County hovers around 98%, it is not likely that significant changes in the black, Native American, or other races will occur over the next ten years. Therefore, this report will not provide narrative detail regarding these racial groups. The recent growth of the Hispanic population is one change that warrants further discussion.

→ Reformat chart for easier reading

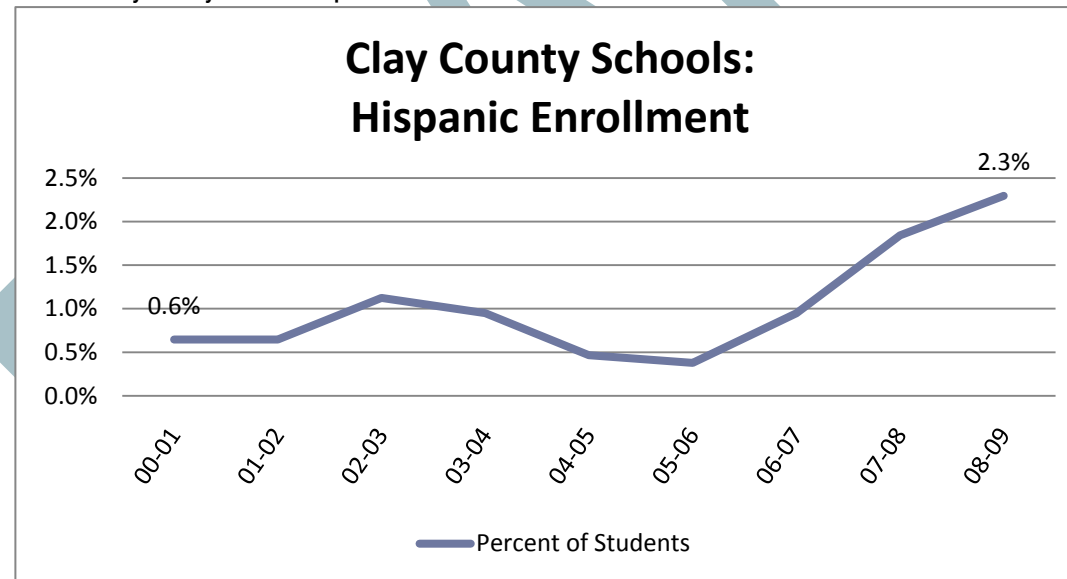
Table 9: Race as a Percent of Population										
		NC	Towns	Cherokee	Clay	Graham	Haywood	Jackson	Macon	Swain
1990	White	75.56%	99.70%	95.75%	98.69%	93.54%	98.02%	87.94%	97.53%	70.65%
2000		72.11%	98.80%	94.82%	98.01%	91.91%	96.85%	85.68%	97.18%	66.33%
2009		73.82%	--	95.11%	97.62%	89.97%	96.87%	84.85%	96.01%	69.93%
	<i>90-00 % Change</i>	-3.44%	-0.91%	-0.93%	-0.68%	-1.63%	-1.17%	-2.26%	-0.36%	-4.32%
	<i>00-09 % Change</i>	1.71%	--	0.29%	-0.39%	-1.93%	0.02%	-0.83%	-1.16%	3.60%
	<i>Cumulative % Change</i>	-1.74%	--	-0.64%	-1.07%	-3.57%	-1.15%	-3.09%	-1.52%	-0.72%
1990	Black	21.97%	0.00%	1.79%	0.57%	0.01%	1.38%	1.58%	1.64%	1.74%
2000		21.59%	0.13%	1.59%	0.80%	0.19%	1.27%	1.67%	1.20%	1.70%
2009		21.61%	--	1.95%	1.35%	0.59%	1.52%	2.36%	2.06%	1.57%
	<i>90-00 % Change</i>	-0.38%	0.13%	-0.20%	0.22%	0.17%	-0.11%	0.08%	-0.44%	-0.04%
	<i>00-09 % Change</i>	0.03%	--	0.36%	0.55%	0.40%	0.26%	0.70%	0.86%	-0.13%
	<i>Cumulative % Change</i>	-0.36%	--	0.16%	0.78%	0.57%	0.14%	0.78%	0.42%	-0.17%
1990	American Indian and Alaska Native	1.21%	0.19%	2.01%	0.55%	6.31%	0.38%	9.93%	0.32%	27.33%
2000		1.24%	0.17%	1.63%	0.33%	6.84%	0.49%	10.20%	0.28%	29.03%
2009		1.26%	--	1.43%	0.36%	7.77%	0.53%	10.53%	0.35%	25.76%
	<i>90-00 % Change</i>	0.03%	-0.02%	-0.38%	-0.21%	0.53%	0.11%	0.27%	-0.04%	1.71%
	<i>00-09 % Change</i>	0.02%	--	-0.20%	0.03%	0.93%	0.04%	0.33%	0.07%	-3.27%
	<i>Cumulative % Change</i>	0.05%	--	-0.58%	-0.19%	1.46%	0.15%	0.59%	0.02%	-1.56%
1990	Other Races, 2 or More Races	1.26%	0.10%	0.45%	0.20%	0.14%	0.22%	0.54%	0.51%	0.28%
2000		5.06%	0.90%	1.95%	0.87%	1.06%	1.39%	2.45%	1.35%	2.93%
2009		3.30%	0.00%	1.52%	0.68%	1.67%	1.08%	2.26%	1.58%	2.74%
	<i>90-00 % Change</i>	3.80%	0.80%	1.50%	0.67%	0.92%	1.17%	1.91%	0.84%	2.65%
	<i>00-09 % Change</i>	-1.76%	--	-0.44%	-0.19%	0.61%	-0.32%	-0.20%	0.24%	-0.19%
	<i>Cumulative % Change</i>	2.04%	--	1.06%	0.48%	1.53%	0.86%	1.72%	1.07%	2.45%
Source: US Census Bureau, 1990 and 2000; NC State Data Center, NC EDIS										

Hispanic Population. Beginning with the 1990 Census, people of Hispanic and Latino descent are counted as members of an ethnic group rather than members of a race. People of Hispanic and Latino descent can be any race *and* of Hispanic/Latino ethnicity. It is important to note that Hispanic and Latino people are historically undercounted in decennial censuses. An up-to-date count of the Hispanic population is one area in which Clay County may see a noticeable difference between the data that is available today and the data that will be available from the 2010 Census.

In North Carolina, trends point to a rapidly expanding Hispanic population. Clusters of Hispanic people tend to form in areas where there is a strong labor need, such as areas with large meat processing productions,⁸ and areas with large-scale agricultural operations. The Hispanic growth trend in these areas is upward and pronounced. Just as the increase in the Hispanic population correlates with the types of areas identified, absence of these areas in southwestern North Carolina correlates to a Hispanic growth rate that lags behind the state. This is not to say that the Hispanic population is not growing. According to the 2000 Census, Clay County's Hispanic population was 1% of the total population. By 2008, the Hispanics accounted for 2% of the population.⁹ While this may not seem significant, note that a 2% increase is greater than any race change in Clay County.

School enrollment data also documents the growth in the Hispanic population, as seen in Chart ____. Additionally, anecdotal evidence from health care and social service providers lends support to a growing Hispanic population.

Chart 6: Clay County Schools Hispanic Enrollment



Source: NC Department of Public Instruction, Annual Statistical Profiles, 2000-2001 through 2008-2009

⁸ Keenan-Flagler Report: http://www.kenan-flagler.unc.edu/assets/documents/2006_KenanInstitute_HispanicStudy.pdf

⁹ Pew Hispanic Center: <http://pewhispanic.org/states/?countyid=37043>

It is likely that Clay County will continue to be attractive to Hispanics. When asked what brought him to the area, one Latino focus group participant shared that he was drawn to Clay County for the same reasons as many others—for work, because it is small and quiet, and it is a good place to raise a family. As is the case with many communities in North Carolina, Clay County should expect to see the county’s population become more diverse during the planning period. This presents many opportunities (e.g. new business opportunities, general cultural diversity) and challenges (e.g. language barriers in the schools).

HOUSEHOLD TRENDS

The following tables present housing characteristics for Clay County and neighboring counties. Clay County’s median home value is above average, and becomes more so during each time-period. In 1990, Clay’s median home value was \$1,032 above the comparison area’s average. By 2009, it was \$12,596 above comparison area’s average. The trend in Clay County, as in other counties, is steadily increasing housing values.

One other trend to note is the shrinking household size that is noticeable in Clay County and in the surrounding counties. In 2000, Clay’s average household size was 2.9—comparable to other jurisdictions. Household sizes across the nation are shrinking. Household size is an important consideration when planning for land development and housing. The trend toward smaller households suggests a need for types of housing that accommodate singles, empty-nesters, and single-parent households.

→Reformat table for easier reading

	Cherokee	Clay	Graham	Haywood	Jackson	Macon	Swain
1990 Population	20,170	7,155	7,196	46,942	26,846	23,499	11,268
1990 Total Housing Units	10,319	4,158	4,132	23,975	14,052	17,174	5,664
1990 Total Households	7,966	2,928	2,772	19,211	9,683	9,834	4,173
1990 Average Household Size	2.91	2.90	2.98	2.83	2.91	2.76	3.01
1990 Median Home Value <i>Adjusted for Inflation (2009 Dollars)</i>	\$86,888	\$92,704	\$77,864	\$97,751	\$103,442	\$102,512	\$80,546
2000 Population	24,298	8,775	7,993	54,033	33,121	29,811	12,968
2000 Total Housing Units	13,499	5,425	5,084	28,640	19,291	20,746	7,105
2000 Total Households	10,336	3,847	3,354	23,100	13,191	12,828	5,137
2000 Average Household Size	2.3	2.3	2.4	2.3	2.3	2.3	2.4
2000 Median Value <i>Adjusted for Inflation (2009 Dollars)</i>	\$94,079	\$113,502	\$80,339	\$111,377	\$115,940	\$121,324	\$99,609
<i>1990-2000 Percent Change</i>	8.3%	22.4%	3.2%	13.9%	12.1%	18.4%	23.7%
2009 Population	27,733	10,663	8,212	57,825	38,337	33,971	13,984
2009 Total Housing Units	16,549	7,079	5,572	32,231	23,245	24,444	8,240
2009 Total Households	12,257	4,884	3,608	25,388	15,646	14,923	5,696
2009 Average Household Size	2.2	2.2	2.2	2.2	2.2	2.2	2.4
2009 Median Home Value	\$115,921	\$139,590	\$94,943	\$150,387	\$133,201	\$140,504	\$114,412
<i>2000-2009 Percent Change</i>	23%	23%	18%	35%	15%	16%	15%
2014 Population	29,487	11,731	8,247	59,316	40,446	36,217	14,422
2014 Total Housing Units	17,815	7,902	5,614	33,355	24,934	26,236	8,370
2014 Total Households	13,190	5,448	3,673	26,256	16,772	15,998	5,924

2014 Average Household Size	2.2	2.1	2.2	2.2	2.2	2.2	2.4
2014 Median Home Value	\$123,561	\$150,059	\$101,786	\$162,944	\$147,646	\$152,016	\$123,733
<i>2009-2014 Projected Percent Change</i>	7%	7%	7%	8%	11%	8%	8%
Source: NC EDIS, US Census Bureau, 1990 and 2000, Bureau of Labor Statistics							

KEY PLANNING ISSUES AND OPPORTUNITIES

The following are some of the key issues and opportunities identified in this chapter:

- The County should plan for a population of 13,537 in 2020 and 14,472 in 2030, based on the growth projections detailed in Table__.
- The age structure of the county is comprised of a large number of aging and senior citizens. The County should plan for services needed to support the aging population. The County should also investigate strategies that will entice young adults to remain in or return to the county to balance the range of ages in the county.
- Results from the 2010 Census and the American Community Survey will be released in 2011. The County should plan to evaluate new figures against those in this Plan.
- It is likely that the Hispanic population will continue to increase over the next ten years. If this trend proves to be true, Clay County may want to implement measures that maximize opportunities and mitigate challenges.